

# ■ Eyelashes mask



## The indisputable eye's frame

The eyelashes are an evident frame of the eye and therefore the mascara becomes an important protagonist in every make-up. For its correct application you have to go from the root to the tip. Afterwards you separate the eye-lashes with the **paint brush 111** (page 34) to avoid anti-aesthetical make-up accumulations. Mascara can also be used on artificial eye-lashes.

**Tip:** The upper eye-lashes can bear several layers of mascara, but avoid more than one layer on the lower eye-lashes, as they easily seem overloaded and can stain the lower lid.



**Natural applicator.**

For a fresh and soft look

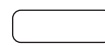
**CZ13001, CZ13003 y CZ13004**



MP-01  
Black



MP-03  
Blue



MP-04  
White

## Long Eyelashes

It recovers the eyelashes with a protective layer which makes them longer and visibly separates them. Emulsion O/W which contains natural waxes. Creamy texture. It dries quickly. Water-resistant. Provided in three colors: black, brown and blue.

**Presentation:** 6 ml. Tube with applicator. 3 colors:

## Extra Volumen



**Volume applicator**

For a more daring look.

Give volume to your eyelashes, so they become more relevant and underline your looks. Incorporate natural wax. Its texture dries quickly and it is easy to apply.

**Presentation:** 6 ml. Tube with applicator.

**CZ13011**

## Strong Eyelashes. Treatment



**Natural applicator.**

For a fresh and soft look

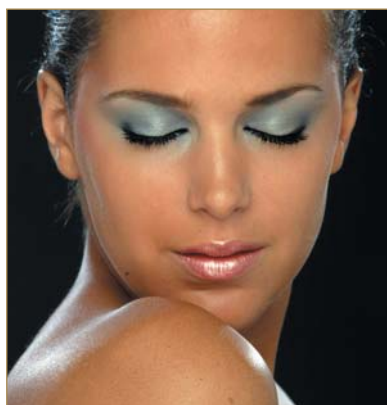
A treatment mascara that regenerates and increases eyelashes growth.

**Presentation:** 6 ml. Tube with applicator.

**CZ13015**

**Attention (!):** minimum treatments between 12 and 15 days, with 2 or 3 daily applications, and never superior to 24 days.

Between treatments, wait 2 weeks for the correct assimilation of the products.



## Black- Black Mask

*Glamorous  
look collection*

Extends and gives volume to eyelashes with a spectacular black colour, emphasizing each of them. It is the called smoke black. Outlines the look with a special glamour that you will not find in another eyelashes mascara.

**Presentation:** 6ml. Container with applicator.

**CZ13020**

