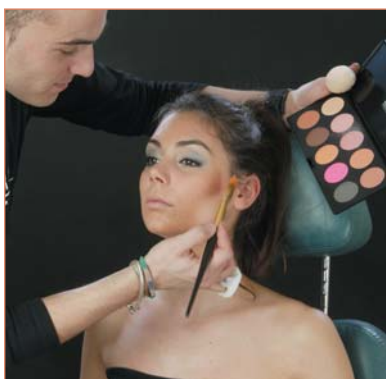


Blushers



How to apply blushers

Blushers are used to provide color shades to the face. It can create more aggressive, extreme, innocent or healthy faces. Its use has varied a lot according to the fashions, but at present, thanks to the many different styles of our society, it can be used in many different ways. The blusher can be applied starting from the middle point of the ear, following the form of the cheekbone, until the perpendicular at the highest spot of the eye-brow. Afterwards blur the color upwards to make the face lively. In order to achieve a different make-up style, we apply a touch of color on both cheeks. The blusher can be applied with a broad **brush 120, 121 and 121** (pages 38 and 39).

Individual cases



A selection of pigments and silicates of a great purity which leave a sensation of softness on your skin. Easy to apply. It leaves on the skin an even long lasting ultra-fine film. It prevents dehydration as it does not absorb skin humidity.

Presentation:
Contents: 7 gr.

CZ10100 ... CZ10109 y CZ10402



Blusher palette



Includes all shades except BR-402.

CZ02001

Pack format



Individually sold pack for refilling colours in your professional palette, your display or to create your own personalized palette

CZ10200...CZ10209 y CZ10420